



With Grateful Hearts
Me ka Na'au Ho'omaika'i

THE DIOCESE OF HONOLULU



Introduction

On January 25, 1941, Pope Pius XII established the Diocese of Honolulu, building upon the foundation provided by the extraordinary accomplishments of early missionaries. The Diocese of Honolulu is one of the most diverse dioceses in the United States and is unique for its island geography. Today, the diocese includes 66 parishes, 26 missions and several other places of worship where 90 priests minister to over 250,000 Catholics. There are 33 Catholic schools in the diocese, including 25 elementary schools, seven high schools and one university.

The Growing Need

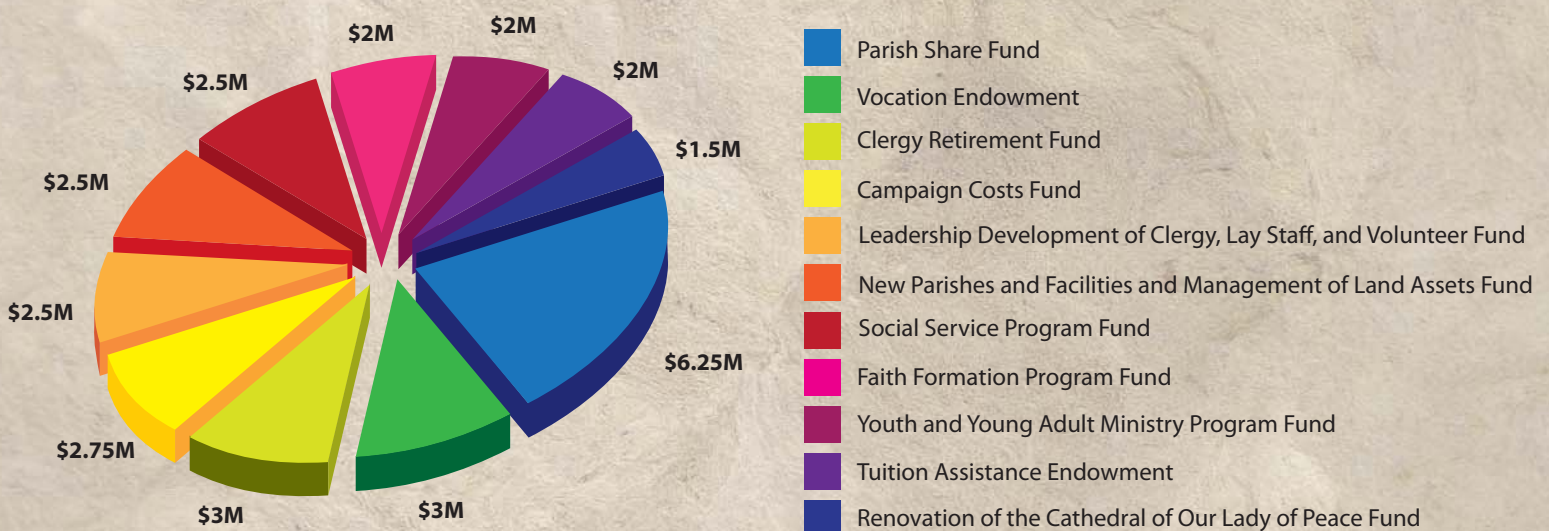
The total Hawai'i state population is estimated to be 1.3 million. Approximately 20 percent of Hawai'i's residents are Catholic. Hawai'i's population is growing nearly 10 percent each decade and is anticipated to exceed 1.6 million by 2030.

In the past year, 3,127 persons were baptized, 2,095 received first communion, 1,225 young people were confirmed, religious education programs served 7,622 children and teenagers and 650 couples were married.

Looking to the Future

In 2006, the Diocese of Honolulu began a review of the pastoral, program and facility needs of the diocese. The strategic-planning process culminated on January 25, 2008 with the promulgation of Witness to Jesus: Diocesan Road Map for Pastoral Program, and Facility Needs 2008-2013. This Road Map has identified short- and long-term needs that must be addressed if the Catholic Church in Hawai'i is to minister effectively in the coming years.

The Diocese of Honolulu thus began considering a major campaign to respond to the critical needs of the present and to prepare for the future. In late 2007 a comprehensive feasibility and planning study was conducted to gauge the reception and timing of a diocesan-wide campaign. Based on growth, identified needs and the input of those participating in the planning process, Bishop Silva made the decision to embark upon a comprehensive \$30 million capital and endowment campaign to help ensure the Church is prepared for the future.



New and Expanded Programs

\$17,000,000



Leadership Development of Clergy, Lay Staff and Volunteer Fund: \$2,500,000

The people of the Diocese of Honolulu are entrusted to the pastoral care of their bishop, a successor to the Apostles. The continuing spiritual formation, education, training and mentoring of priests' pastoral skills is recognized as central to their primary role as spiritual leaders. In addition, priests need to be wise about management and have the skills needed to identify, oversee and delegate to competent lay leaders.



Vocation Endowment: \$3,000,000

The need for more priests in the diocese is critical. Currently the parishes of the diocese are served by 90 priests - each priest serves a community population base of approximately 13,600. To maintain this ratio, and assuming future population estimates are accurate, a total of 120 priests will be needed by 2030. Priests will be needed to replace those retiring and dying, to staff new parishes and for expanded programs. Annually, the diocese spends \$40,000 to educate each seminarian. Currently, there are four seminarians, with two more recently accepted.



New and Expanded Programs

\$17,000,000

Faith Formation Program Fund: \$2,000,000

Priests alone cannot provide the ministry necessary in diocesan parishes and schools. Today, parishes and schools are blessed with the gifts and talents of deacons, religious and laity whose generosity and devotion make possible the mission of Christ in the diocese. As priests need proper formation, so do those who assist priests in the service of God's mission.

The faith formation programs of the diocese have made great strides in providing solid human, theological, pastoral and spiritual formation for those to whom the bishop entrusts leadership responsibilities in ministry. In some cases education, training and mentoring programs designed to improve the knowledge base and leadership skills of lay staff and volunteers throughout the diocese need to be strengthened, and in other cases they need to be established and implemented.



Youth and Young Adult Ministry Program Fund: \$2,000,000

The most valuable gift that Catholic parents can give their children is quality faith-based education and formation. In 2007, more than 8,000 children and youth participated in parish religious education programs. Passing on the Catholic faith to future generations is a great responsibility and challenge, especially in the climate of today's culture. It is essential that we minister not only to young children, but that we continue to reach out to our youth and young adults, ensuring that they find their place in the life of the Church.

Beyond Catholic school programs, the diocese strives to engage Catholic youth and young adults in dialogue, ensuring that parishes are inviting places, engaging the hearts and minds of our young people and meeting the needs of their generation. The campaign will provide funding for the formation of leaders who will minister to youth and young adults and for programs, materials, and activities that involve them in the life of their parishes.



New and Expanded Programs

\$17,000,000

Social Service Program Fund: \$2,500,000

Despite the economic and population growth taking place in Hawai'i, poverty, homelessness and hunger remain a significant problem. With the many changes in government assistance programs, more of the responsibility for responding to the poor is being shifted to non-profit and faith-based organizations.



Catholic Charities Hawai'i and the Office for Social Ministry reach out to people in need. More than 25,000 people of all ages and faiths are served annually through a range of health and social services that address homelessness, lack of affordable housing, unplanned pregnancy, domestic violence, immigrants, seniors and persons with disabilities. The programs and services of these agencies are some of the diocese's most tangible expressions of Jesus' command to "love one another." The campaign will provide new funding to make possible better coordination of the Office for Social Ministry with community and government resources to increase the supply of affordable housing.



Clergy Retirement Fund: \$3,000,000

A growing number of priests in the Diocese of Honolulu are beginning to reach retirement age. Most retired priests continue to work in some capacity long after 'official' retirement. After a lifetime of devotion and service, we must ensure that they are taken care of in their retirement years. There are 21 priests who are 70 years of age or more and 18 additional priests who are between 60 and 69 years old. The monies raised will be directed to the funding of the retirement plan for diocesan priests thereby lessening the financial responsibility of the parishes to make up the shortfall.



New and Expanded Programs

\$17,000,000

Tuition Assistance Endowment: \$2,000,000

Now more than ever, Catholic schools serve as an integral partner with parents in the formation of their children into young adults. Catholic schools have been long proven as an effective form of passing along our Catholic faith. Academic excellence, coupled with discipline and values, make Catholic schools a unique treasure for the Church, as well as a force for good in today's society.

Catholic schools in our diocese educate over 11,000 students in twenty five elementary and seven secondary schools. Our Catholic schools continue to provide quality education, however operating costs have increased dramatically in recent years making tuition increases an annual necessity. As a direct result, many families find it harder to meet spiraling tuition costs.



The average annual tuition cost for one elementary student is nearing \$5,640, while high school tuition is approaching \$9,400. In the 2007-08 school year, 1,109 Catholic school students (701 elementary and 408 high school) applied to the Augustine Educational Foundation for tuition assistance. The Augustine Foundation was able to provide assistance to only 582 families – 52 percent of those seeking aid. Application results for the 2008-09 school year indicated that 48 percent of the families that applied for aid fall below the poverty level. Financial grants averaged \$1,000 for elementary students and \$1,250 for high school students. Increasing our scholarship endowment by \$2,000,000 would increase the size of the current endowment by 23 percent, allowing us to increase grant levels as well as be able to assist approximately 20 percent more families currently seeking aid.



Physical Facilities and Land Assets

\$13,000,000



The parish is the center of Catholic life. It is where we worship, baptize our children and see them grow closer to God through the sacraments of the Eucharist, Reconciliation and Confirmation. We bind members of our parish communities together in the sacrament of Matrimony and we pray for those who go before us to be with the Lord and console their families.

Parish Share Fund: \$6,250,000

To meet all the sacramental, spiritual formation and religious education needs of a growing Catholic population, the parishes and schools of the diocese must act now to repair, maintain and in some cases construct new facilities to meet the demands for Catholic services and ministries. Churches, parish halls, convents, rectories and schools must be improved or repaired to address the needs of each community. Beyond supporting the expansion and strengthening of parish and school services and ministries, this campaign includes the commitment that for every dollar that is raised in a particular parish, 25 percent up to a parish's goal and 50

percent of monies above the goal (up to 150 percent) and 80 percent over 150 percent of goal will be returned to the parish for the parish to apply to needs that it identifies.

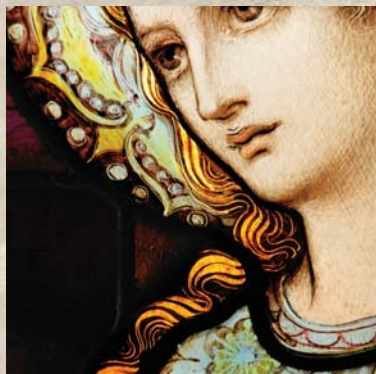
New Parishes and Facilities and Management of Land Assets Fund: \$2,500,000

Continued and widely-diverse population growth in Hawai'i is creating a critical need for new or reorganized parishes, facilities and schools. It is the goal of the diocese to have parishes and churches that are adequate in size and number and reasonably located relative to existing and projected population centers. This will better enable all Catholics in Hawai'i to more fully participate in their parishes. Currently within Hawai'i, the diocese, parishes and various religious orders own or have some interest in more than 290 parcels of land involving a total of approximately 3,360 acres. The campaign will make monies available to ensure the proper management and use of the land and properties of the diocese.

Physical Facilities and Land Assets

\$13,000,000

Renovation of the Cathedral of Our Lady of Peace Fund: \$1,500,000



The Mother Church of the Diocese of Honolulu is the Cathedral of Our Lady of Peace. It is the site from which the bishop presides over the Hawai'i Catholic

community. On August 16, 2008, our cathedral is 165 years old. It was in this historic cathedral that Father Damien was ordained a priest and Mother Marianne and her companions were first welcomed to Hawai'i. Many people from all the islands of Hawai'i share in the living history of this beautiful "Fort Street Church." Carrying out the detailed work needed to restore the beauty of this treasure is a sacred responsibility shared by all. Generations to come will be grateful they are the recipients of a beautiful church for the glory of God and the renewal of our faith.



Campaign Costs Fund: \$2,750,000

These monies will be used to cover the costs associated with the development and deployment of the capital and endowment campaign. Associated costs include campaign counsel, development and publishing of all campaign materials, video and administrative support.

How You Can Help With Grateful Hearts

As the diocese moves forward in our faith, every Catholic is invited to share the blessings and responsibilities of shaping a Church that will respond to the spiritual and physical needs of those whom God has entrusted to our care.

“Honor the Lord with your wealth, with first fruits of all your produce; then will your barns be filled with grain, with new wine in your vats will overflow.”

- Proverbs 3: 9-10

At this important moment of our history, let us keep in mind the many blessings the Lord has given us. Recognizing that all of our material goods are gifts from the Lord, we are asked in the Gospel to give back a portion of these gifts in thanksgiving for God’s generosity and goodness to us. Scripture tells us that Christian stewardship goes beyond giving from our surplus. Stewardship requires a gift made from our substance.

With Grateful Hearts seeks significant three- to five- year pledges from donors in all of our parishes. Gifts can be accepted in a variety of forms, with an emphasis on those that can be used immediately. All gifts are tax deductible to the fullest extent allowed by law.

Sample Gift Plan (5-year period)

Five-year pledges are recommended, and all gifts are tax deductible as allowed by law. In addition, donors are asked to consider the tax benefits that may be gained from gifts of appreciated securities.

Total Gift	10% Initial Payment (at time of gift)	Annual Payment (of the balance)	Quarterly Payments (of the balance)	Monthly Payments (of the balance)	Daily Sacrifice
\$100,000	\$10,000	\$18,000	\$4,500	\$1,500	\$50
\$75,000	\$7,500	\$13,500	\$3,375	\$1,125	\$37.50
\$50,000	\$5,000	\$9,000	\$2,250	\$750	\$25
\$25,000	\$2,500	\$4,500	\$1,125	\$375	\$12.50

Pledges

Pledges payable over three-to-five years allow donors to consider more substantial commitments than are possible with one-time cash gifts. Donors who pledge may determine payment schedules to meet their own charitable or tax needs. Payments can be made by check, credit card, electronic funds transfer (EFT) or gifts of securities.

Securities

Gifts of stock to the **With Grateful Hearts** campaign can be a source of significant tax benefit to the donor by eliminating capital gains taxes. The Diocese of Honolulu will sell a gift of stock and the value of the gift will be determined at the time of transfer.

Matching Gifts

If your company has a matching gift program, you may be able to enhance the impact of your gift by requesting a matching gift form from your company and including it with your pledge card.

“A pure and generous love is the best witness to the God in whom we believe.”

- Pope Benedict XVI, from his first encyclical “God is Love”

DIOCESE OF HONOLULU
CAMPAIGN OFFICE

6301 Pali Highway

Kaneohe, HI 96744

(808) 203-6712

